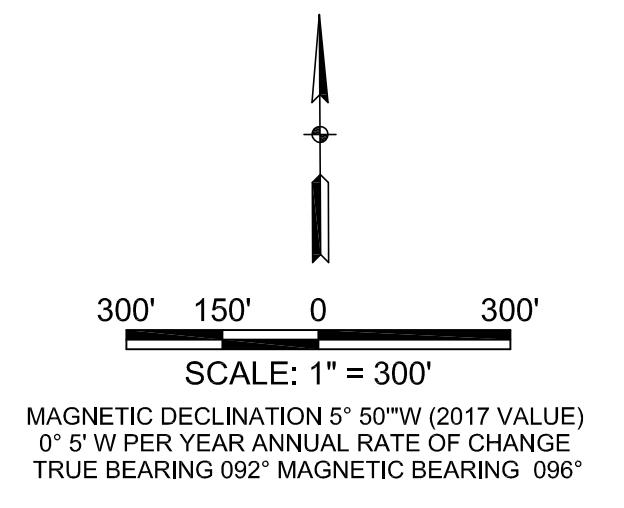


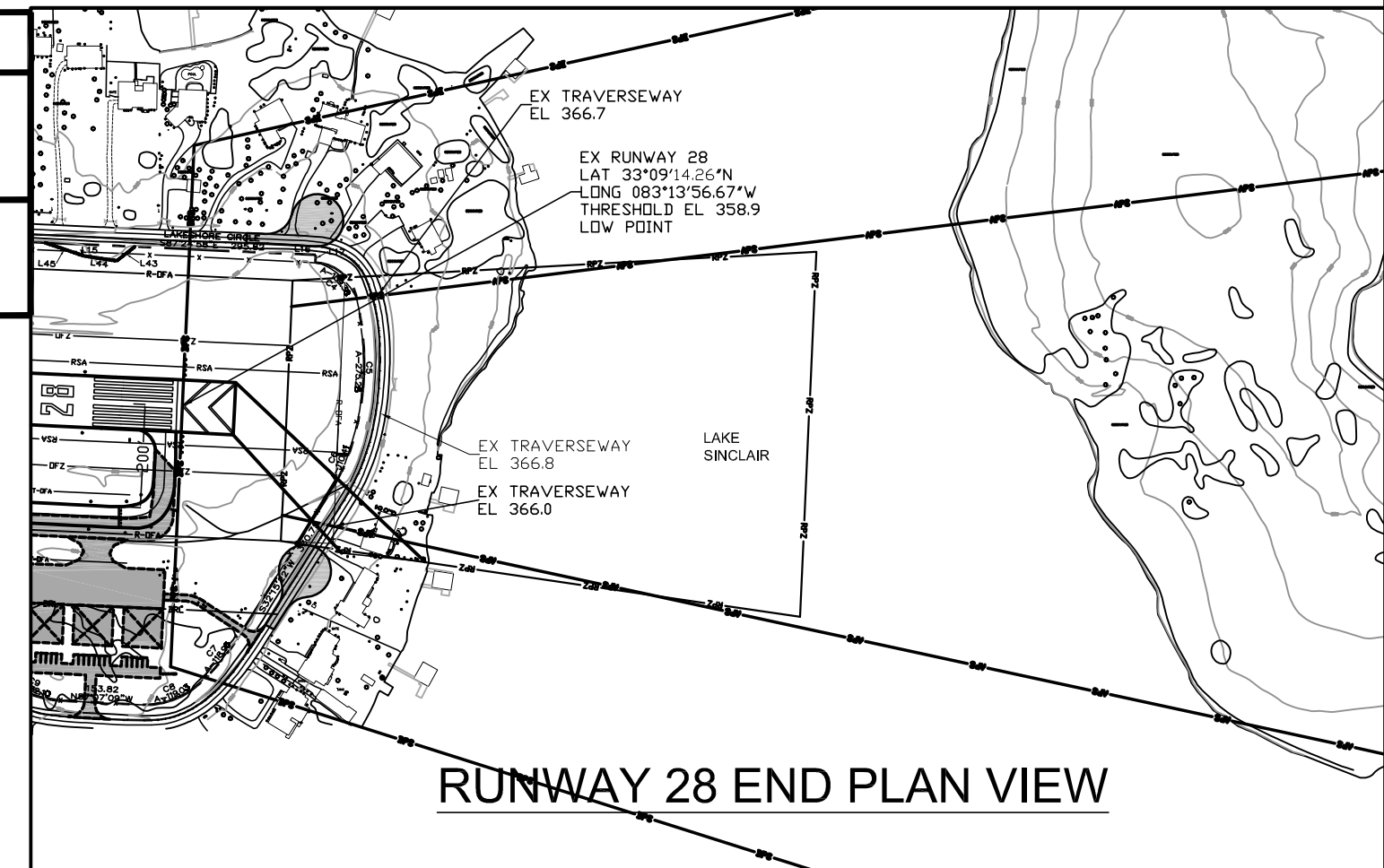
DECLARED DISTANCES TABLE					
RUNWAY		TORA	TODA	ASDA	LDA
10	EXISTING	5509'	5509'	5509'	5509'
	ULTIMATE	5509'	5509'	5509'	5509'
28	EXISTING	5509'	5509'	5509'	5509'
	ULTIMATE	5509'	5509'	5509'	5509'

MODIFICATION TO STANDARDS		
NO.	DATE	DESCRIPTION
1	1/10/2019	RUNWAY 28 ROFA
2	N/A	N/A
3	N/A	N/A
4	N/A	N/A



AIRPORT PLAN VIEW

GDOT APPROVAL	DATE
GEORGIA DEPARTMENT OF TRANSPORTATION	DATE



RUNWAY 28 END PLAN VIEW

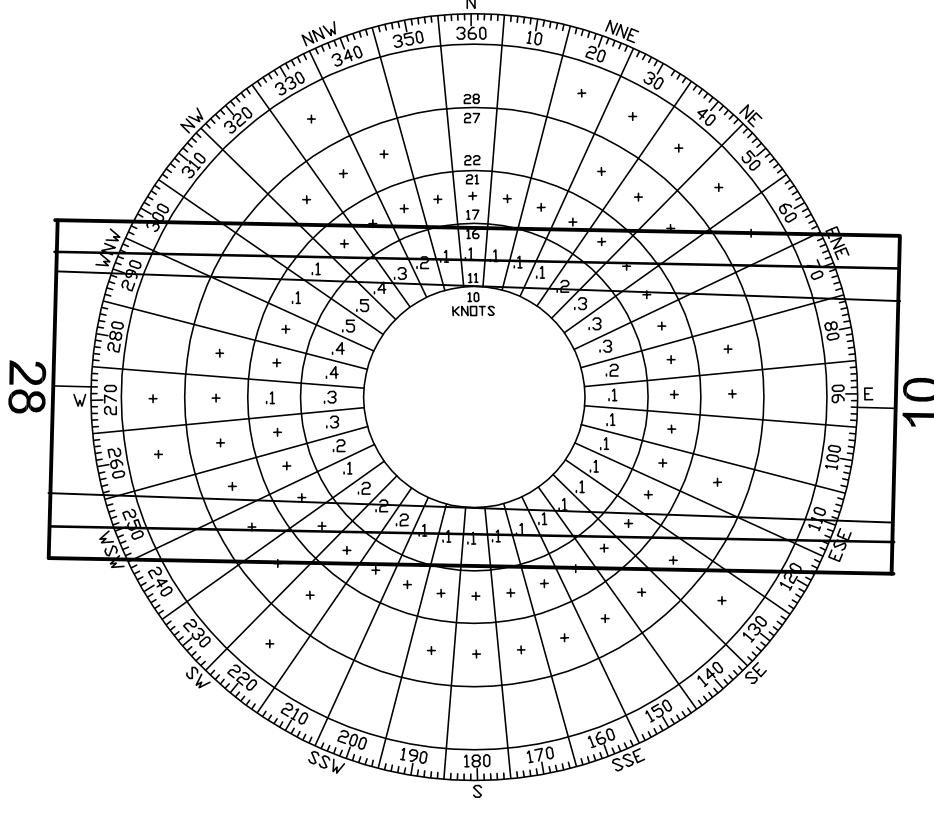
GENERAL NOTES FOR ALP

1. BEARINGS SHOWN ARE MAGNETIC UNLESS INDICATED OTHERWISE.
2. LOCAL AIRPORT ZONING TO BE ACCOMPLISHED ACCORDING TO FAR PART 77.
3. RUNWAY 10 APPROACH 34:1 RUNWAY 28 APPROACH 34:1.
4. ALL SURVEY DATA IS REFERENCED TO NAD 83.
5. TOPOGRAPHICAL INFORMATION TAKEN BY AERIAL SURVEY PERFORMED BY ICM, INC. MAY 8, 2017.
6. BOUNDARY SURVEY PERFORMED BY THOMPSON LAND SURVEYORS, INC. AUGUST 21, 2017.
7. THE RUNWAY DESIGNATION IS NOT ANTICIPATED TO CHANGE DURING THE 20-YEAR PLANNING PERIOD.

RUNWAY DATA				
	EXISTING	ULTIMATE		
RUNWAY LENGTH	5509'	5509'		
RUNWAY WIDTH	100'	100'		
RUNWAY SURFACE TYPE	ASPHALT	ASPHALT		
PAVEMENT STRENGTH	21,000 SWL	60,000 DWL		
RUNWAY REFERENCE CODE	B-II	B-II		
CRITICAL AIRCRAFT	CESSNA CITATION EXCEL	CESSNA CITATION EXCEL		
RUNWAY LIGHTING	MIRL	MIRL		
RUNWAY MARKING	NPI	NPI		
TAXIWAY WIDTH	40'	35'		
TAXIWAY SAFETY AREA	79'	79'		
TAXIWAY OBJECT FREE AREA	131'	131'		
TAXILANE OBJECT FREE AREA	115'	115'		
TAXIWAY LIGHTING	MITL	MITL		
RUNWAY 10				
FAR PART 77 APPROACH TYPE	EXISTING: NON-PRECISION	ULTIMATE: NON-PRECISION		
FAR PART 77 APPROACH CATEGORY	C	C		
TYPE INSTRUMENT APPROACH	RNAV GPS	RNAV GPS		
FAR PART 77 APPROACH SURFACE	34:1	34:1		
APPROACH VISIBILITY MINIMUMS	1,000' MSL, 1 MI.	585' MSL, 3/4 MI.		
APPROACH REFERENCE CODE	BII/5000	BII/4000		
DEPARTURE REFERENCE CODE	BI	BI		
APPROACH LIGHTING	MALSF	MALSF		
AERONAUTICAL SURVEY	18b VGS	18b VGS		
DEPARTURE SURFACE	40:1 (YES)	40:1 (YES)		
THRESHOLD SITING SURFACE	20:1	20:1		
VISUAL GUIDANCE INDICATOR	PAPI-2: 3.00' GLIDEPATH	PAPI-2: 3.00' GLIDEPATH		
RUNWAY END LIGHTING	N/A	N/A		
RUNWAY EFFECTIVE GRADIENT	0.5%	0.5%		
RUNWAY END COORDINATES	LAT. 33° 09' 16.16" N LONG. 083° 15' 01.43" W	LAT. 33° 09' 16.16" N LONG. 083° 15' 01.43" W		
RUNWAY END ELEVATION	384.9	384.9		
DISPLACED THRESHOLD COORDINATES	N/A	N/A		
DISPLACED THRESHOLD ELEVATION	N/A	N/A		
TOUCHDOWN ZONE COORDINATES	LAT. 33° 09' 16.16" N LONG. 083° 15' 01.43" W	LAT. 33° 09' 16.16" N LONG. 083° 15' 01.43" W		
TOUCHDOWN ZONE ELEVATION	384.9	384.9		
RUNWAY SAFETY AREA LENGTH PRIOR TO	300'	300'		
RUNWAY SAFETY AREA LENGTH BEYOND	300'	300'		
RUNWAY SAFETY AREA WIDTH	150'	150'		
RUNWAY OBJECT FREE AREA LENGTH	300'	300'		
RUNWAY OBJECT FREE AREA WIDTH	500'	500'		
OBSTACLE FREE ZONE LENGTH	1600'	1600'		
OBSTACLE FREE ZONE WIDTH	400'	400'		
RUNWAY PROTECTION ZONE LENGTH	1000'	1700'		
RUNWAY PROTECTION ZONE INNER WIDTH	500'	1000'		
RUNWAY PROTECTION ZONE OUTER WIDTH	700'	1510'		

AIRPORT DATA		
	EXISTING	ULTIMATE
AIRPORT LOCATION IDENTIFIER	MLJ	MLJ
AIRPORT REFERENCE CODE	B-II	B-II
MEAN MAX. TEMPERATURE OF HOTTEST MONTH	79.9° F	79.9° F
AIRPORT ELEVATION	384.9	384.9
AIRPORT NAVAIDS	ROTATING BEACON, GPS	SEGMENTED CIRCLE ROTATING BEACON, GPS
AIRPORT REFERENCE POINT COORDINATES (ARP)	LAT 33° 19' 15.21" N LONG 083° 14' 29.09" W	LAT 33° 19' 15.21" N LONG 083° 14' 29.09" W
NPIAS SERVICE LEVEL	GENERAL AVIATION REGIONAL	GENERAL AVIATION REGIONAL
STATE SERVICE ROLE	LEVEL III	LEVEL III

ALL WEATHER WIND ROSE

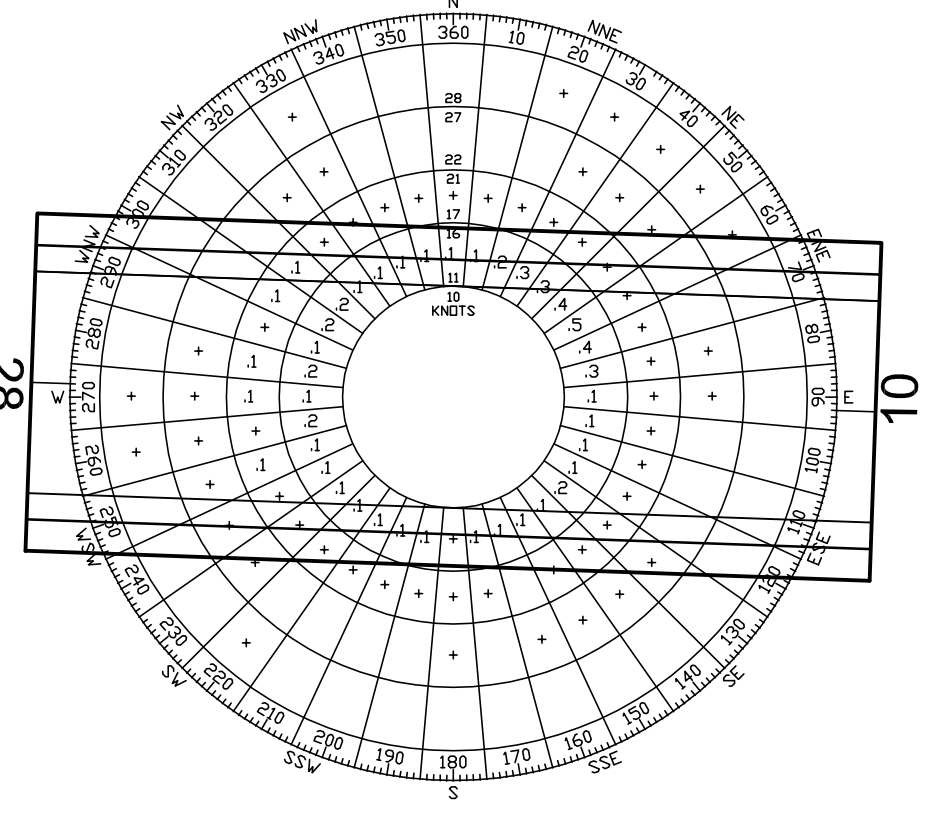


ALL WEATHER WIND DATA SUMMARY

Crosswind Component	Rwy 10	Rwy 28
10.5 Knots (12 MPH)	97.51%	97.51%
13 Knots (15 MPH)	98.91%	98.91%
16 Knots (18 MPH)	99.80%	99.80%

SOURCE: NOAA MIDDLE GEORGIA REGIONAL AIRPORT 2008-2017

IFR WIND ROSE



IFR WIND DATA SUMMARY

Crosswind Component	Rwy 10	Rwy 28
10.5 Knots (12 MPH)	97.53%	97.53%
13 Knots (15 MPH)	98.76%	98.76%
16 Knots (18 MPH)	99.62%	99.62%

SOURCE: NOAA MIDDLE GEORGIA REGIONAL AIRPORT 2008-2017

LEGEND		
	EXISTING	ULTIMATE
GROUND CONTOURS		N/A
BUILDINGS		
AIRPORT PROPERTY LINES		
AIRPORT EASEMENT		
RUNWAY PROTECTION ZONE (RPZ)	RPZ	RPZ
RUNWAY SAFETY AREA (RSA)	RSA	RSA
RUNWAY OBJECT FREE AREA (ROFA)	ROFA	ROFA
TAXIWAY OBJECT FREE AREA (TOFA)	TOFA	TOFA
BUILDING RESTRICTION LINE (BRL)	BRL	BRL
OBSTACLE FREE ZONE (OFZ)	OFZ	OFZ
AIRPORT REFERENCE POINT (ARP)		
RUNWAY CL		N/A
POWER LINES		N/A
PAVEMENT EDGE		
FENCE (6 FT)		
GUIDANCE SIGNS	N/A	N/A

D.A. JONES ENGINEERING, LLC
1953 KENNARD DRIVE
SNELLEVILLE, GEORGIA 30078
(770) 862-3080

REV.	NO.	DESCRIPTION	DATE

AIRPORT LAYOUT PLAN
AIRPORT LAYOUT PLAN
BALDWIN COUNTY AIRPORT
MILLEDGEVILLE, GEORGIA

Designed DAJ
Date 1/10/2019
Scale 1"=400'
Drawn DAJ
Checked DAJ
Project No. 201616
Sheet No. 2
OF 10